

Reg'n No A0004521S  
RMB 5090. Cowes Vic 3922  
President: Phil Dressing  
0423 058 510  
Secretary: Robyn Dale  
0414 706 148  
Email  
smnthsbeachcomber.com

## **SBA NEWSLETTER SUMMER 2019**

As the weather warms up, we've come to the time of year when the tourists could outnumber the residents on our Island. It may still be holiday season for some people. Dr Seuss wrote "Maybe Christmas", he thought, "doesn't come from the store. Maybe Christmas ...perhaps....means a little bit more."

### **What Do You Remember?**

"Memory" is the title of the most famous bittersweet ballad from the Andrew Lloyd Webber musical "Cats". It is sung by old cat Grizabella bringing back memories of her earlier times. Our memories define us who we are. The good and bad moments that we remember, all combine to contribute to how we react to everyday life.

Memory is the faculty of the brain by which data or information is encoded, stored, and retrieved when we need it. Our mind is also divided into two parts. The Short term memory (used for paying attention) and the Long term memory (used for storing)

What storage and retrieval moments in time do you remember? Some will be short term, some are long term. What were your first or your favourite memories?

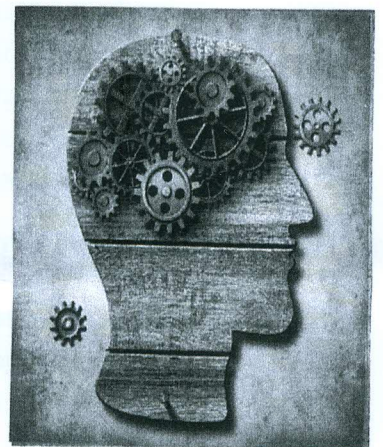
Can you recollect your first birthday, learning the alphabet, first toys, first book, the first day at kindergarten or school, when you learnt a nursery rhyme, your favourite or worst teacher, tying a necktie, learning to swim, went on a holiday, snow, important songs, first movie, first wristwatch, tricks you did, first plane flight, your pets, man landing on the moon, your driving licence, first hamburgers, the corner milk bar lollies, family jokes, first kiss, first date, the first job that earned you some money.

How often in our own lives that we can remember some event that was linked to a certain snatch of music that reminded you of some particular time and place.

Sometimes photographs are visual files of your memory. Computers have a memory for you too (RAM/ROM). Recollections of similar events are great to share with friends and family members. There is a joy of being able to share memories with those who know you best.

Not all memories live forever Maybe you can reflect on a particular memory that changed your life somehow.

Take A Walk Down Memory Lane. Nostalgia ain't what it used to be.



Ian Shand. SBA Newsletter Editor

The Smiths Beachcomber Association Committee takes this opportunity to wish you all a *happy*, joyful and relaxing time for your Christmas season and a healthy and prosperous new year.



## SBA ANNUAL SOCIAL GET-TOGETHER

10.30am on SUNDAY 5<sup>th</sup> JANUARY 2020

COME TO OUR MARQUEE ON

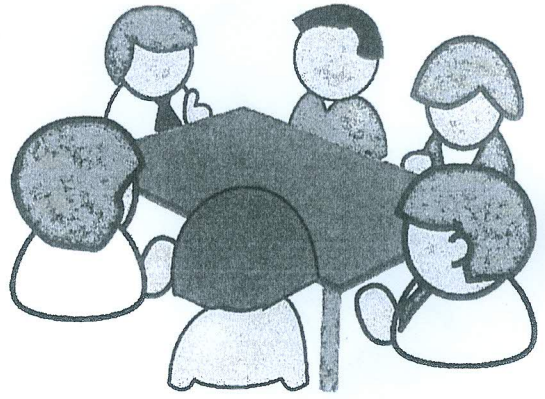
220 SMITHS BEACH ROAD

BRING A PLATE & SOMETHING TO DRINK

All Welcome

COME FOR A SOCIAL CHAT & SEE WHAT YOUR SBA HAS BEEN UP TO THIS YEAR

We look forward to seeing you there.



### Annual Subscriptions

At this time of year the SBA has to remind you that our Annual Subs are due and payable from the 1<sup>st</sup> of January each year. Attached is your subscription form for you to complete and to then forward your reasonably priced membership application to our hard-working Treasurer. You will then be "financial". Send it off this week.



### SBA Facebook

The Smiths Beachcomber Facebook page is now up and running.

You can access it at <https://www.facebook.com/SmithsBeachcomber2016>

It has been set up as a page as opposed to a profile.

The Facebook ID is 1129303750428285

It is set to accept posts from anyone.

Your comments and suggestions are most welcome.

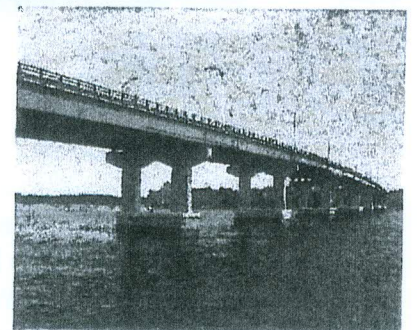
Go to our Website /smithsbeachcomber.com for information.



Find us on  
**Facebook**

### The Gateway To Our Island

How do you get to Phillip Island from the mainland of Australia? We cross the bridge that connects San Remo to Newhaven. To do that we had another earlier necessary suspension swing bridge that was opened in 1940. It had its limitations such as a maximum five tonne weight limit. Passengers on buses had to get out and walk across this earlier swing bridge to be picked up by a bus on the other side. Goods and livestock carted on and off the island had similar loadings and reloadings on the other side. Even so, it changed the direction of Phillip Island by opening it up to tourism and development that previously had not happened.



We needed to build a better one. The new good-looking bridge was designed by the Country Roads Board and this new iconic concrete bridge was opened in 1969. We have just celebrated its 50<sup>th</sup> birthday on 21<sup>st</sup> November. Our bridges have served our communities and visitors well for all reasons as an integral part of Island life.

Perhaps we need it duplicated. Be thankful for it being there, the next time you cross it.



## **FROM THE PRESIDENT'S DESK**

### **Smiths Beach Master Plan:**

Following our last meeting with the then Project Manager, Chris Pecket, we were introduced to Angela Gleeson who has taken the mantle of Project Manager. We have made arrangements to meet with some organisations aligned with the surfing fraternity to ascertain their input to the

Master Plan. I have also had dialogue with the Chief Regional Roads Officer with Regional Roads Victoria, Paul Northey in regard to obtaining his input into our Master Plan from a roads perspective and in particular the intersection of Back Beach Road and Smiths Beach Road and of course the Back Beach Road roundabout. There will be plenty of opportunities for Smiths Beach ratepayers to have input into the draft. I have recently spoken to Angela Gleeson in regard to a briefing prior to Christmas. It is an exciting time for ratepayers to have a say in what they'd like their community to look like.



**Distinctive Areas and Landscapes Act (DALA):** Bass Coast Shire Council announced that our Shire has been declared a Distinctive Area and Landscape. Congratulations to the Shire for their pursuit of this major outcome. Whilst plenty of work needs to be done in regard to the declaration, the notion of finally acknowledging our town boundaries will be an important step to retain the fabric of our little township making our community so attractive. It will be interesting to see what it does for Smiths Beach land values!

**Smiths Beachcomber Social:** Our social get together at the Smiths Beach shop on Sunday 3<sup>rd</sup> November, 2019 was a well patronised event and presented us the opportunity of meeting the shop new managers, Donna, Sarah and Chris. It was a great night and new members of our fraternity were welcomed. I gave a briefing as to where we were in regard to a number of matters pertaining to our community. The event was so popular, we're planning on another. Keep a good bottle of red or white in readiness. We're looking at Sunday 12th January, 2020 at the Smiths Shop again. Keep your eye out on our noticeboard for further details.

**Phillip Island and San Remo Visitor Economy Strategy 2035 (VES):** Bass Coast Shire adopted this strategy in late 2016. I was asked and agreed to participate on their Community Reference Group representing SBA and SBA Committee Member, Phil Wright is also on the Group representing Phillip Island Conservation Society. I'd commend interested parties to access the Strategy via this link. <https://d2n3eh1td3vwdm.cloudfront.net/general-downloads/Strategies/2016-08-29-FINAL-Phillip-Island-San-Remo-Visitor-Economy-Strategy-2035-Growing-Tourism.PDF>

**Road works in Smiths Beach:** I received a telephone call from a Dolphin Drive property owner some two weeks ago advising that Council had advised him that Dolphin Drive and a couple of other streets in Smiths were to be "renovated" Dolphin Drive, in particular, had a dust suppressant surface applied some years ago now. The surface, I believe, was called "Permaseal" SBA received no prior advice from Council in regard to the works to be carried out. I contacted Council and firstly, received an apology for not being contacted well before the planned works and secondly, was provided details in regard to the deterioration of the Dolphin Drive surface. Council advised it had become uneconomic to leave the road the way it was and that the works were to begin a matter of two to three days later. The Permaseal was to be removed and a gravel surface laid. The complainant expressed concerns in regard to safety and dust. I formally requested to Council that the works be postponed enabling us to "straw poll" property owners however, it was too late. The works went ahead as planned.

**Phillip Island Nature Park's Community and Environment Advisory Group:** Our Association continues to participate on this Group and attends their quarterly meetings.

**Smiths Beach Special Charge Scheme:** As previously reported, we've heard no more from Council regarding a special charge street scheme. Works have yet to commence in Surf Beach or Sunderland Bay. Smiths Beach is third in line. Undoubtedly, this aspect will be included in the Smiths Beach Master Plan. I'd be interested in hearing your views on this or any other aspect of Smiths Beach community life.



## From the President's Desk (continued)

**Totally Renewable Phillip Island (TRPI):** As previously mentioned, your Association is represented on this group. Their aim is for Phillip Island to be carbon free by 2030. Issues such as Electric Vehicles, Renewable Energy, Carbon Farming and many others will make up the "recipe" to achieve the aim. There may be some opportunities for Smiths Beach ratepayers to benefit from installation of solar systems on their roofs. As a preliminary step, I'd suggest you access <https://eico-op.org.au/event-totally-renewable-phillip-island-open-day/>

**Hooded Plovers:** I'm unsure of the number of Hooded Plover eggs currently at Smiths but I understand barriers and signage has been erected by Phillip Island Nature Parks (PINP) staff. PINP are looking for volunteers to provide a presence close to the nesting area thus educating beach visitors who may be unaware of the delicate nature of these near endangered birds. Untethered dogs on the beach are a major concern.

**Aspirational Pathways:** Part of the Visitor Economy Strategy is the development of an Aspirational Pathway around Phillip Island. To that end, a couple of us together with representatives from Phillip Island Nature Parks and the Shire will be undertaking a walk from Sunderland Bay to Smiths Beach. The endeavour will be to explore a possible formal pathway but the challenge will be private landowners allowing access to their properties. I recently contacted a coastal property owner who was quite adamant that we were not to access his property on the basis he was growing cattle and regulatory controls prohibited members of the public accessing the same land. This then brought into question coastal landowner property boundaries. I believe thirty metres above the "High Tide Mark" This may, in some cases result in the boundary being half way up a cliff! Perhaps the DALA will enable clarification.



**Beachcomber YCW Activity Master Plan:** Previous discussions with Bass Coast Shire Planning staff indicated that the BBQ detailed in the Master Plan will be constructed before the end of the year. It is to be located on the south eastern aspect of the first car park. This facility is identified on the Smiths Beachcomber Activity Master Plan as "F" Works have yet to commence so I've initiated further contact.

**Phillip Island Integrated Transport Study (PIITS):** Apropos of my previous advice in regard to this matter, I presented a session to the Bass Coast Shire's Community Connections Session on Wednesday 13<sup>th</sup> November, 2019 countenancing issues such as the Back Beach Road roundabout and the notion of Phillip Island Integrated Study's "Safe Systems Approach". This States that it accepts that people will make poor judgements and therefore the whole system needs to be more forgiving of those errors. Personally I disagree and provided samples of why this approach doesn't work. I also questioned Regional Roads Victoria relationships with Council and our local member. As a result of this presentation, Council agreed to meet with our local State Member, Jordan Crugnale, to clarify those relationships. Whether SBA gets an invitation to that meeting remains to be seen. I also presented the same session to the PIITS Community Reference Group two weeks later. The working group have a fair bit of work to be done.

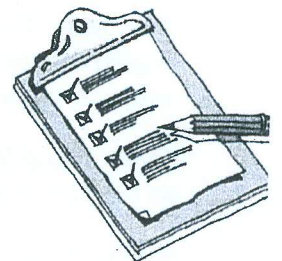
Phil

December 2019

## Your Emergency Evacuation Plan (what's on it?)

The Bureau of Meteorology are forecasting a long and hot summer. It has also been one of the driest winters on record. If there was a major fire or an ember attack at **Smiths Beach** and your home and possessions were in danger, what does your own **Household Fire Plan** say to do? What are your available exits. It could be a fight or flight situation. Is your garden hose, fire extinguisher and battery radio (for 774 information) and mobile phone accessible? With your **Evacuation Plan**, where would you go, to the beach, the car-park or where? And what would you carry with you in your **Emergency Kit**? On your list would you have documents for banking, insurance, your medications or some photo albums? Think about It!

Make up your **Fire Plan List** now, attach it to your fridge. **PREPARE – ACT – SURVIVE**





## Woolamai Beach Surf Life Saving Club

The following information relates to patrols for Smiths Beach for the season 2019-2020

30 November – 25 December

Saturdays 1.00pm–4.30pm  
Sundays 10.30am–4.30pm  
Public Holidays same as Sundays exclude Xmas Day

26 Dec 2019 = 26 Jan 2020

Monday – Friday 10am–6pm  
Saturdays 10am–6pm  
Public Holidays same as Saturdays

27 Jan 2020 – 13 April 2020

Saturdays 1.00pm–4pm  
Sundays 10.30am–4.30pm  
Public Holidays same as Sundays

Times may be based on volunteer ability and availability

## Summer in the Nature Parks

Phillip Island Nature Parks is a not for profit, self-funded organisation with a united purpose to protect nature for wildlife and inspire people to act.

Summer is a very busy time in nature and across the Nature Parks, here is a quick update on what's new and what we will be up to over the summer months.

- **New-Look Locals Pass:** This exclusive pass offers locals year-round entry to the Nature Parks' four key attractions including the Penguin Parade, Koala Reserve, Antarctic Journey at the Nobbies and Churchill Island – all for the price of one visit. Along with being able to visit any attraction any time, locals receive a quarterly newsletter, member discounts and invitations to exclusive member events with their pass. For the month of December, you will also get a coffee on us when you sign up for your locals pass which is available to residents and students of Bass Coast Shire.
- **Crimson berry:** Monitoring cameras have been set up on the rare Crimson berry plants along the South coast of Phillip Island between Gap Road and YCW beach aiming to determine the level of predation pressure experienced by the plants. Upon discovering many instances of wallaby browsing, the plants have been fenced to protect this threatened species.
- **Little penguins:** The breeding season is going well with great numbers of penguins crossing at the Penguin Parade and chicks fledging at higher than average weights.
- **Hooded plovers:** The breeding season has begun with rangers and volunteers on the beaches keeping an eye on them. We ask everyone to observe all beach entry signage and help us to protect this vulnerable shorebird.
- **WILD at the Penguin Parade:** This summer, the stunning new Penguin Parade visitor centre will become the home of an amazing sand sculpting event. Commencing on Boxing Day, the never-before-seen exhibit will transport visitors into the WILD as they discover more than 60 animals from around the world brought to life in incredible, intricate sand sculptures.

The Nature Parks team wishes everyone seasons greetings and a safe and happy summer season. Follow our story at [www.penguins.org.au](http://www.penguins.org.au) and #PhillipIslandNP



## OUR SMITHS BEACH GENERAL STORE

Sarah and Chris welcome you and provide good friendly service with your milk, bread and newspapers that start your day. They have built a fine reputation for quality coffee and good, simple, wholesome, hearty foods and drinks for the locals and the visitors to enjoy. Their opening hours are from 7.30 am to 5pm but holiday hours could be extended each day. See you there for breakfast or any other meal or snack.



Our phone number is 5952-2613.

Come and see us sometime

## Priceline Pharmacy Cowes

Present this voucher to receive

# 10% OFF Storewide

Exclusive to Priceline Pharmacy Cowes  
Valid until 31st December 2019

Excludes gift vouchers & prescriptions

**Priceline Pharmacy Cowes**  
24 Thompson Avenue, Cowes  
Tel: 5952 2061

### Trading Hours:

Mon - Fri: 8.30am - 6.00pm  
Sat: 8.30am - 5.30pm  
Sun: 9.00am - 5.30pm



priceline  
pharmacy



## New Year's Eve/Hope You Remember It

Many of us will join in the celebration by singing "Auld Lang Syne." It is a Scots poem written by Robert Burns in 1788 and set to the tune of a traditional folk song. It is well known world-wide.

As you remember, some of the words went-

"Should old acquaintance be forgot and never brought to mind  
Should old acquaintance be forgot and days of auld lang syne  
For auld lang syne my dear, for auld lang syne  
We'll take a cup of kindness yet for auld lang syne

And there's a hand my trusty friend and give me a hand of thine  
We'll take a cup of kindness yet for auld lang syne.  
For auld lang syne my dear, for auld lang syne  
We'll take a cup of kindness yet for auld lang syne."

The song is about the times of days gone by- "old long since." It means don't forget our old times and for the sake of them we will have a drink and remain friends. "Cheers!"

*Happy New Year!*



## Odd Jottings

Another Roundabout is on its way. Last issue it described it at the intersection of the Tourist Road and Woolamai Beach Road. The latest will be at our corner of Back Beach Road and the Tourist Road into Cowes. There will be some hiccups ahead with this..

Bluebottles have been found on some of our beaches . They will give a painful sting so don't touch their tentacles. You may require appropriate medical attention with hot water and so avoid swimming at these beaches.